

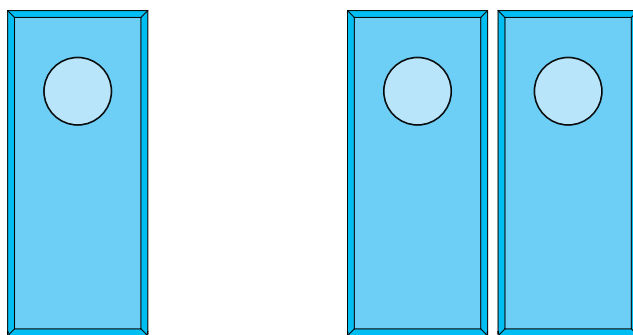
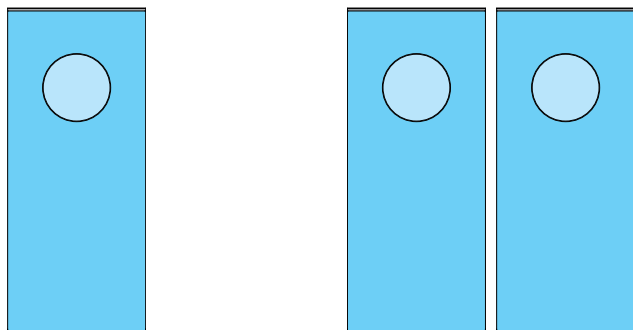
Ditec PAMH60

Istruzioni di installazione sistema profili PAMH60

Installation instructions for PAMH60 profiles system

ENTRE **MATIC**

IP2226 • 2015-05-29



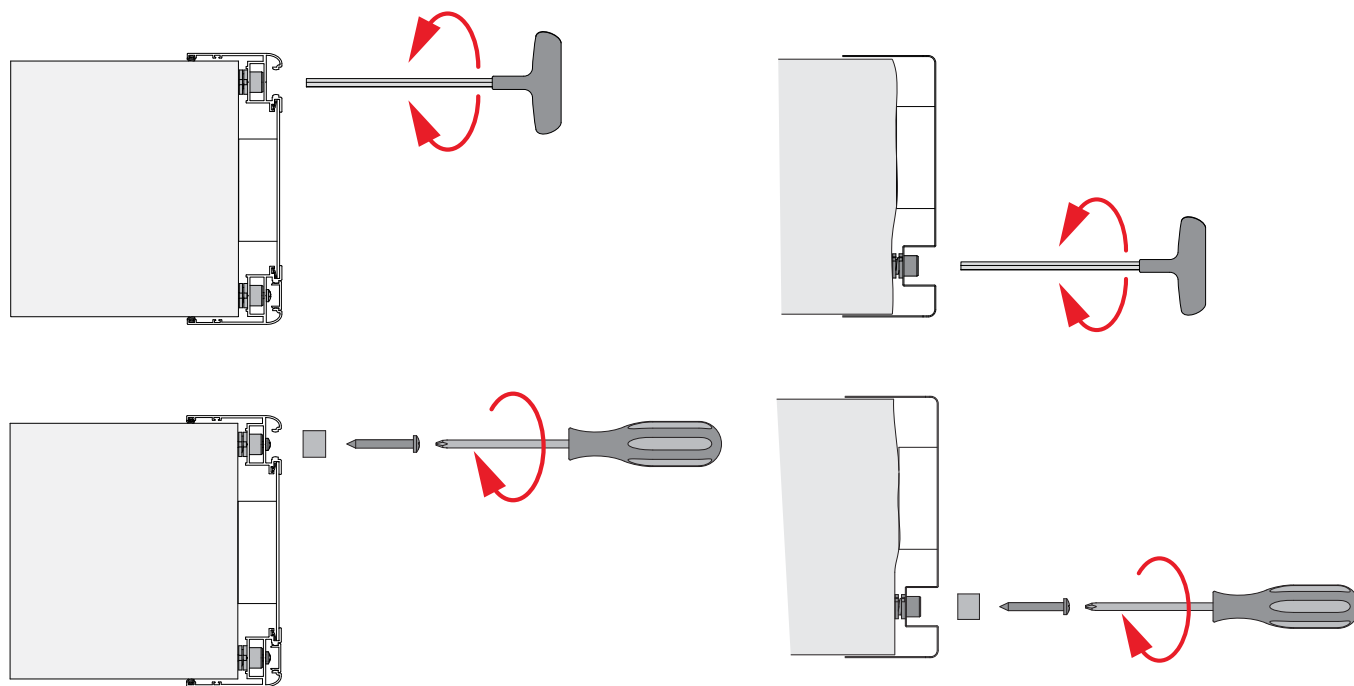
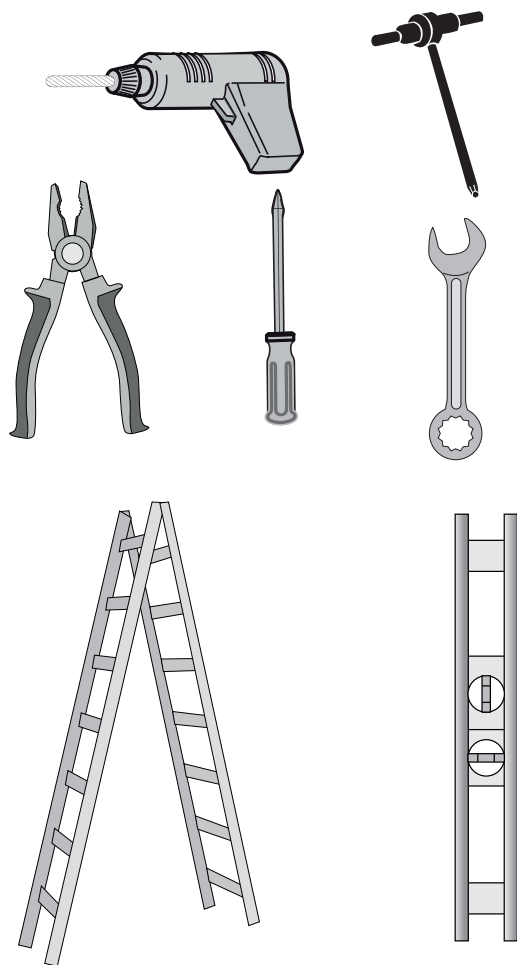
www.ditecentrematic.com



1. Installation instructions

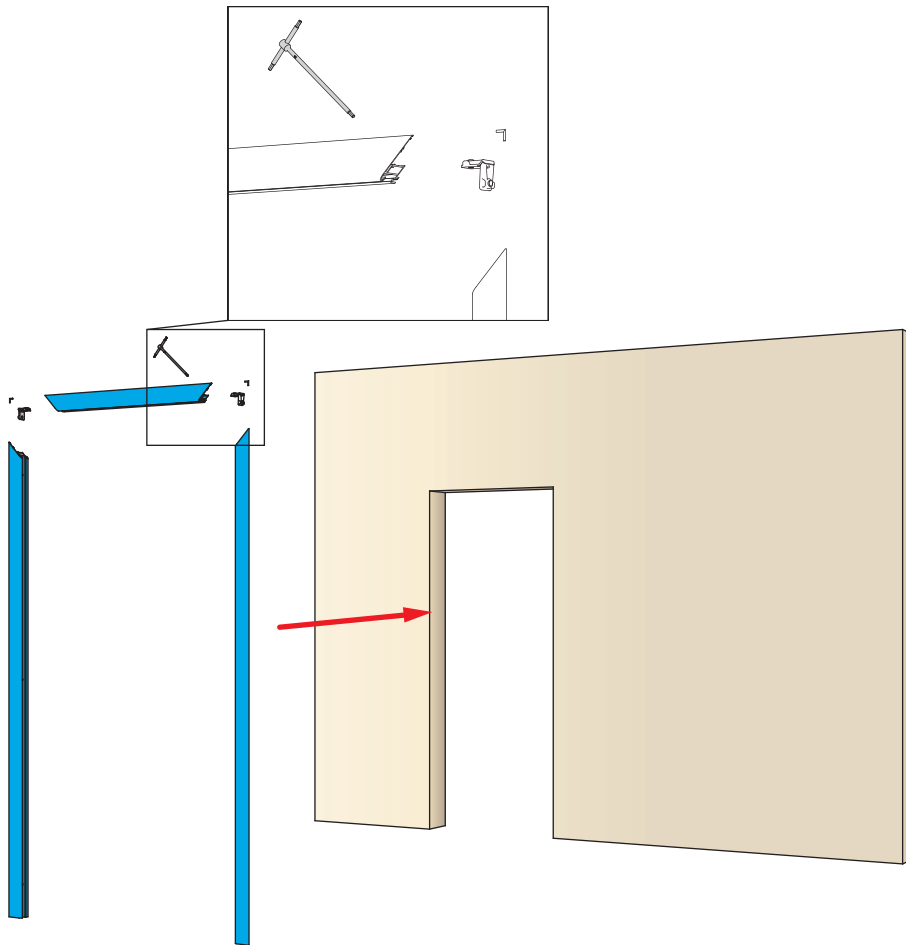
List of equipment
Elenco dotazioni
Ausstattungsverzeichnis
Liste des accessoires fournis
Lista de suministro
Lista de equipamentos

Regulation instructions
Indicazioni di regolazione
Angaben zur Einstellung
Indications de réglage
Indicaciones de regulación
Indicações de regulação

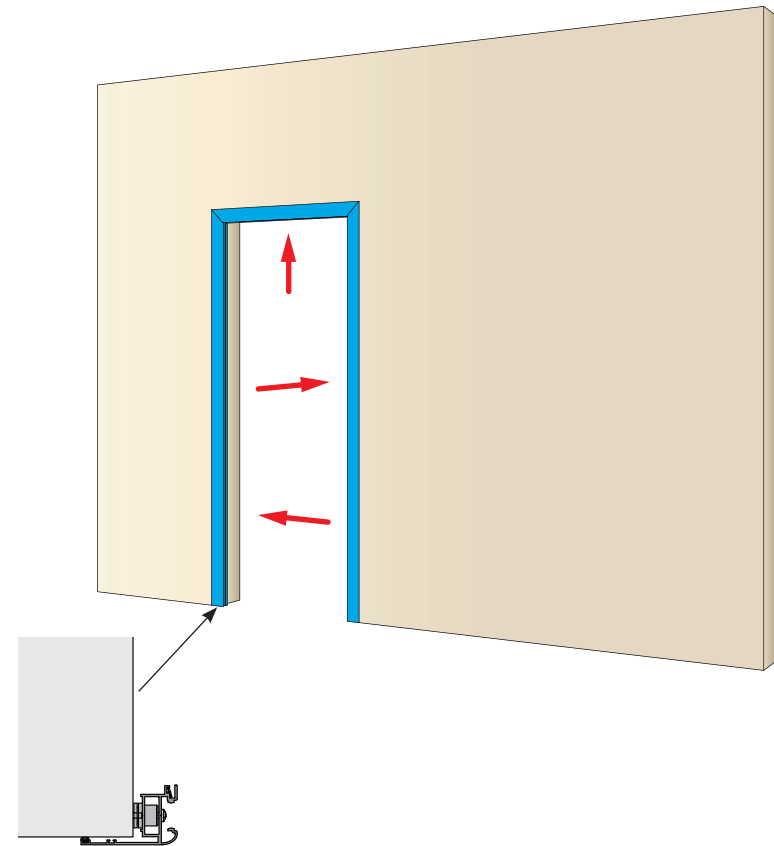


2. Installation instructions for one moving door wing VALORHH

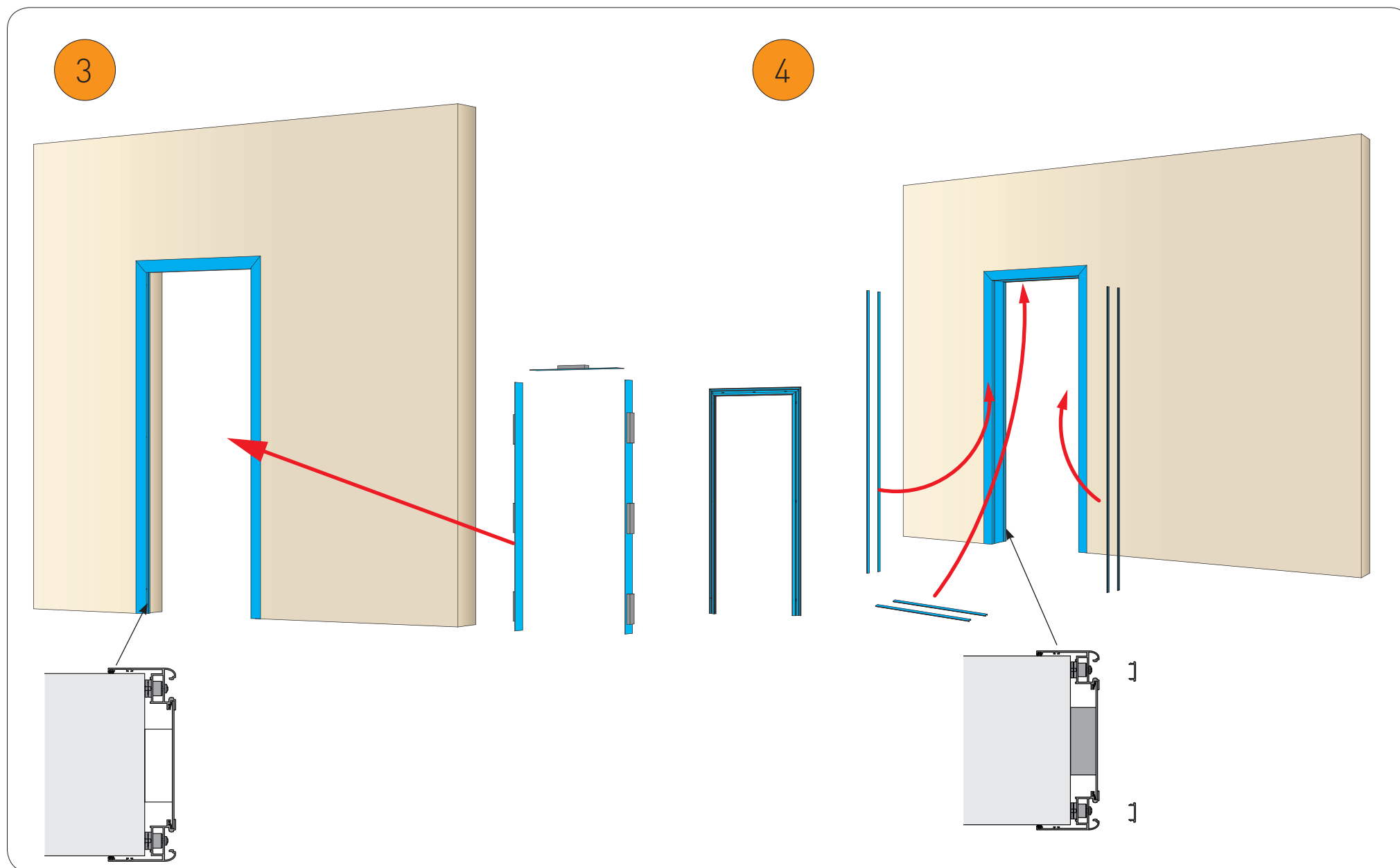
1 Frame installation



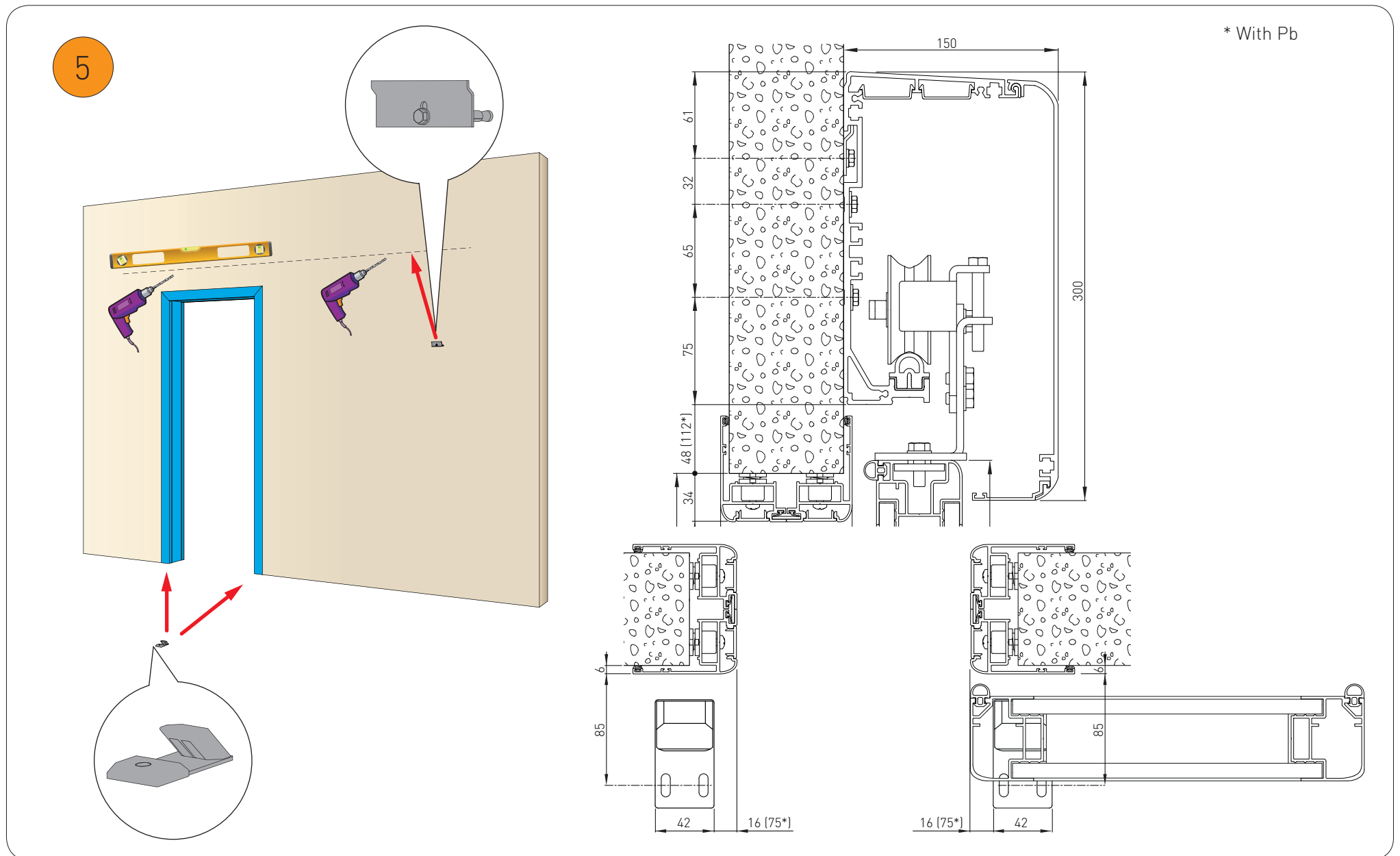
2



2. Installation instructions for one moving door wing VALORHH

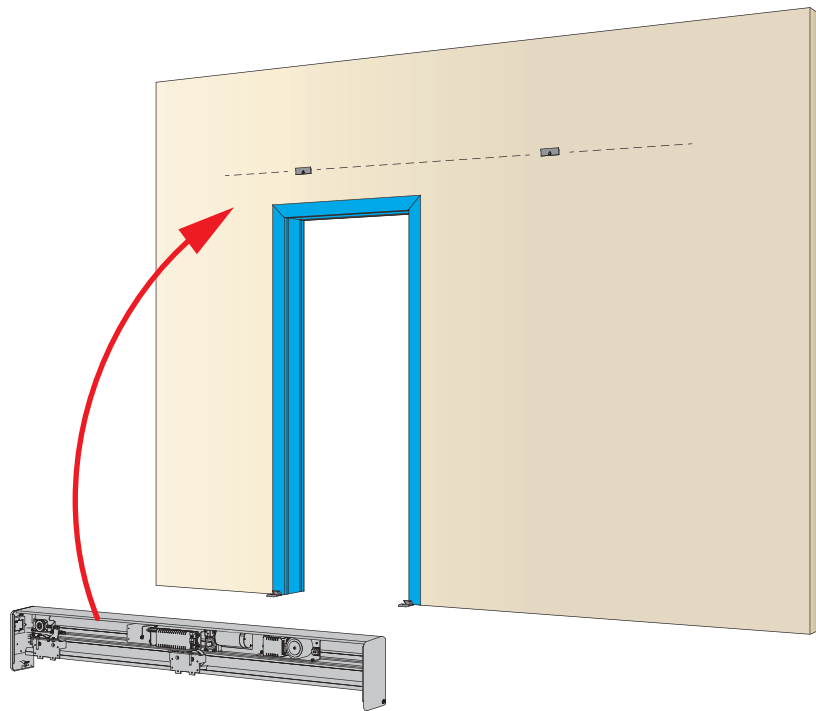


2. Installation instructions for one moving door wing VALORHH

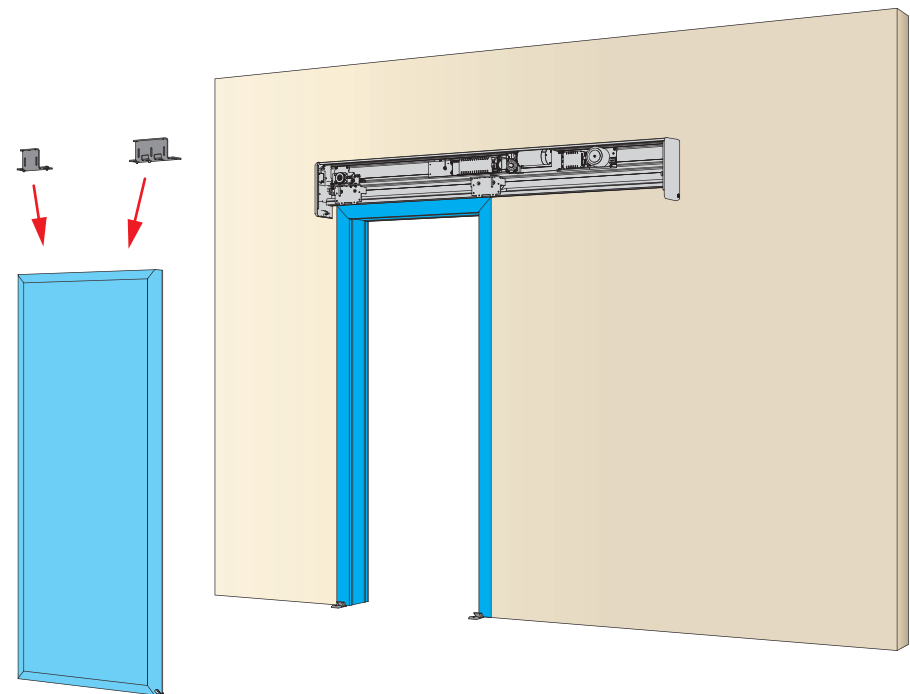


2. Installation instructions for one moving door wing VALORHH

6

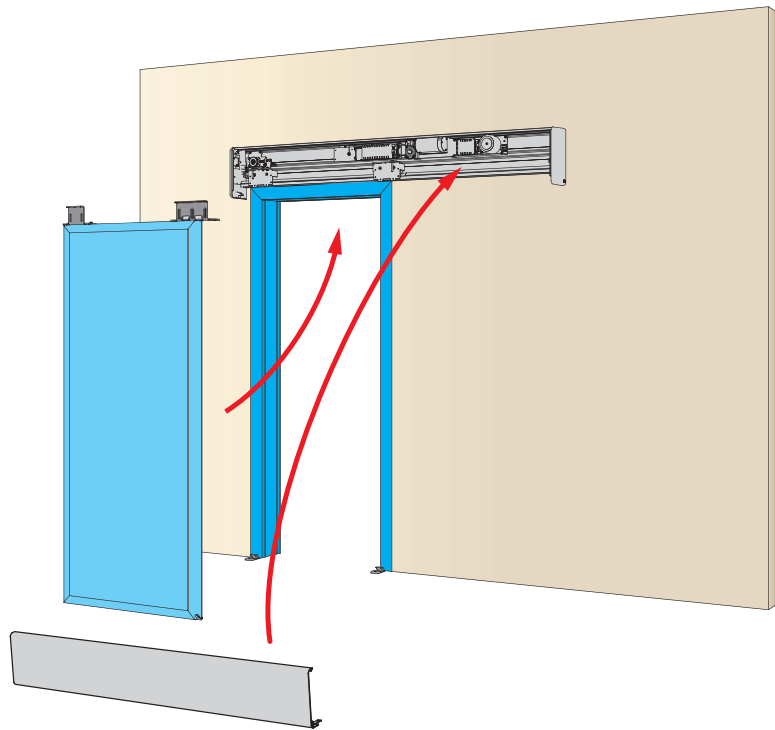


7

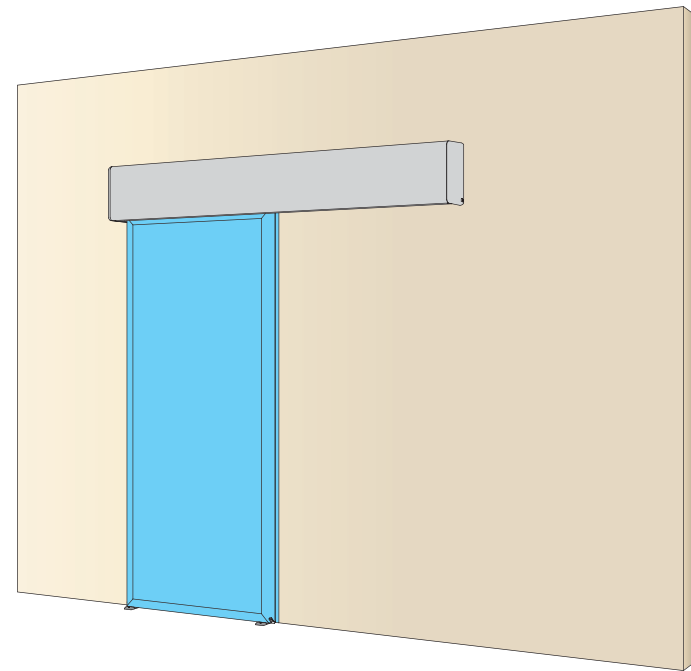


2. Installation instructions for one moving door wing VALORHH

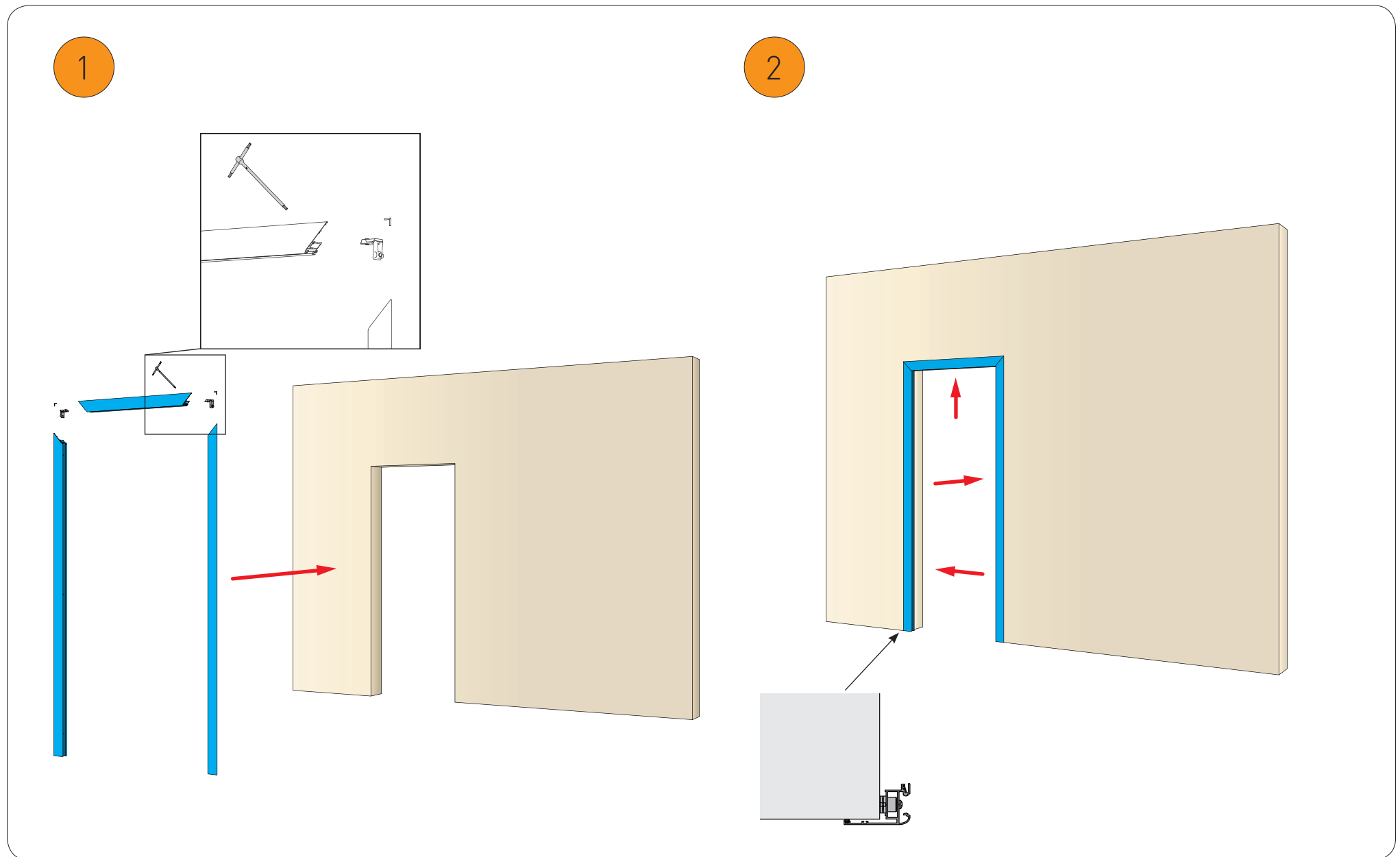
8



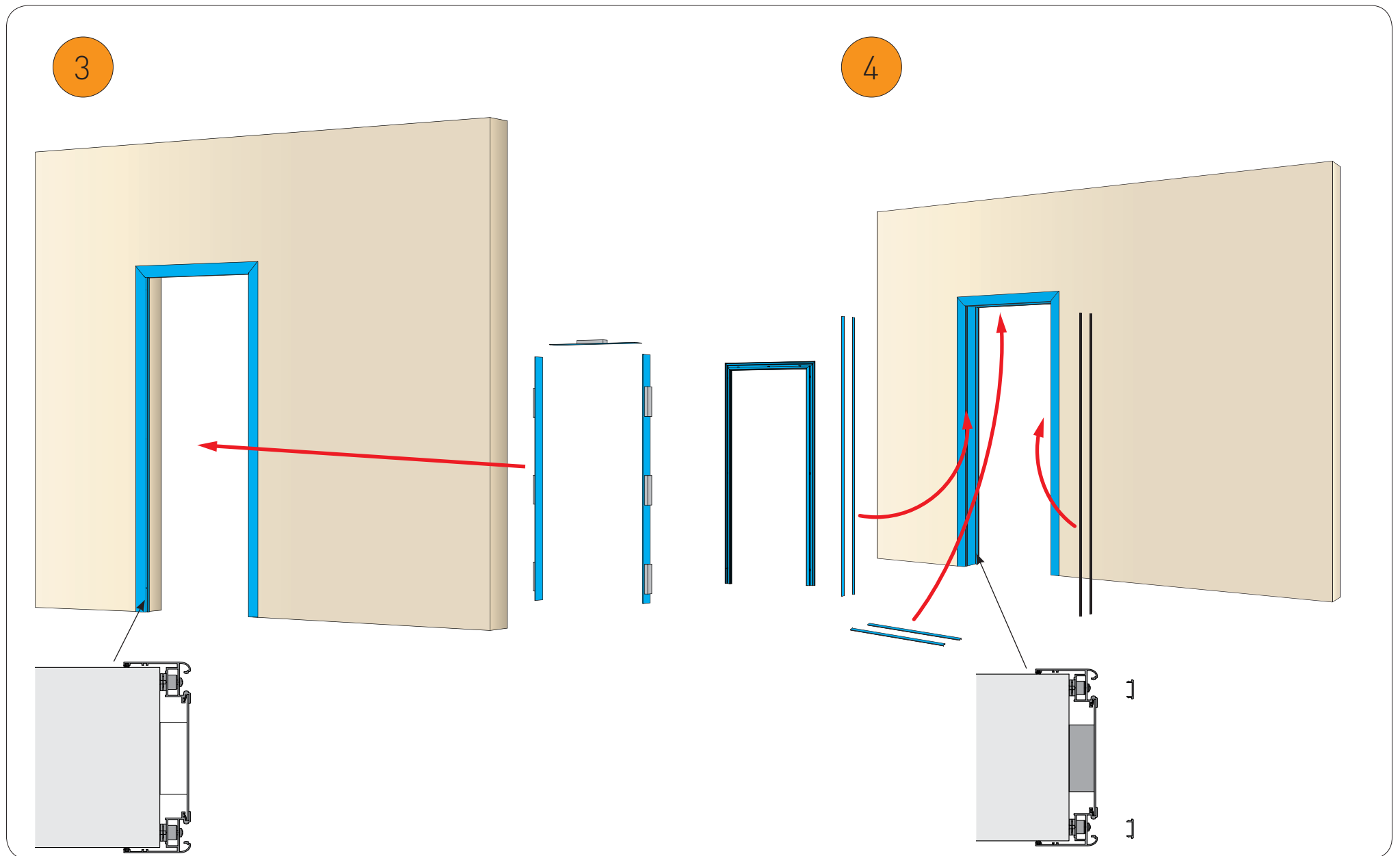
9



3. Installation instructions for one moving door wing VALORHS

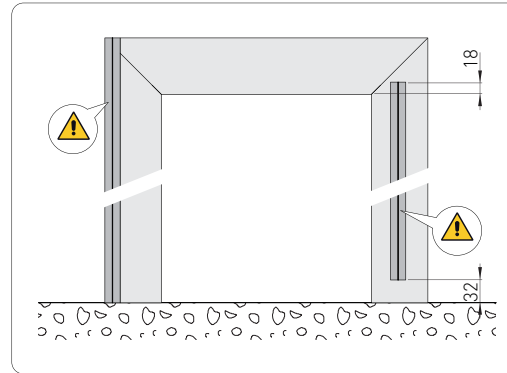
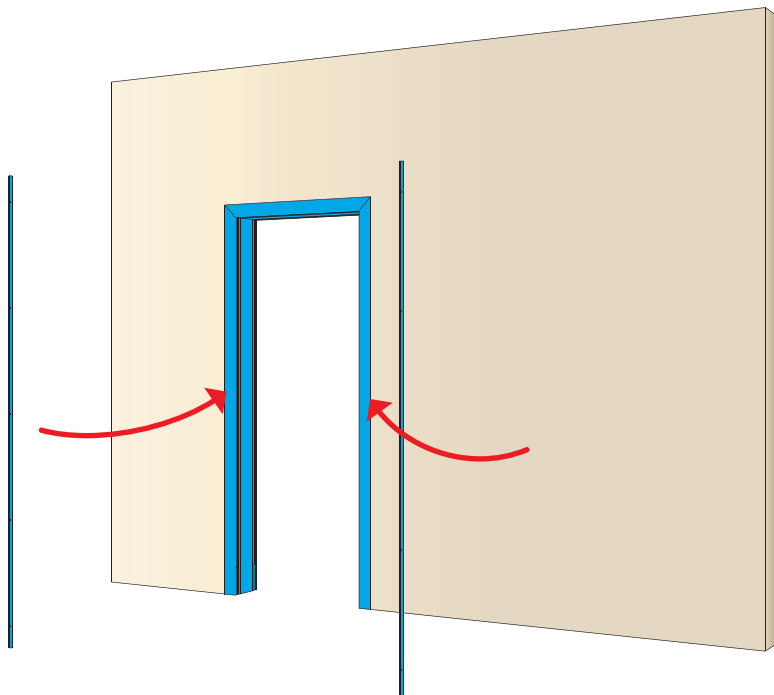


3. Installation instructions for one moving door wing VALORHS

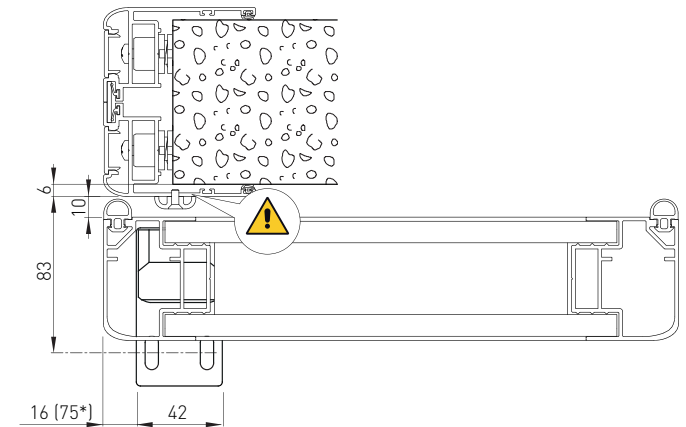
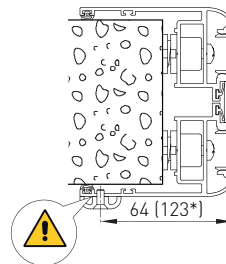


3. Installation instructions for one moving door wing VALORHS

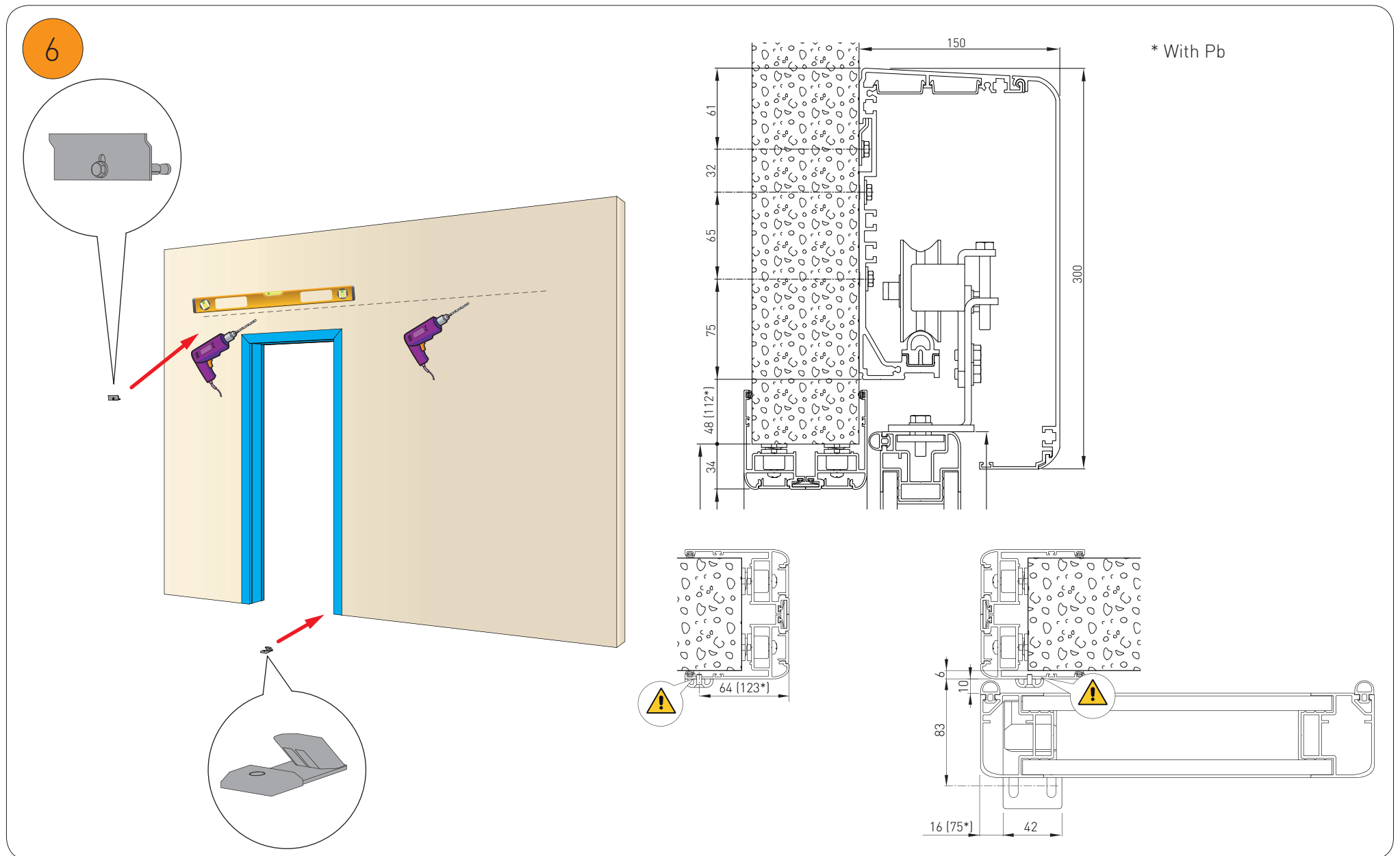
5



* With Pb

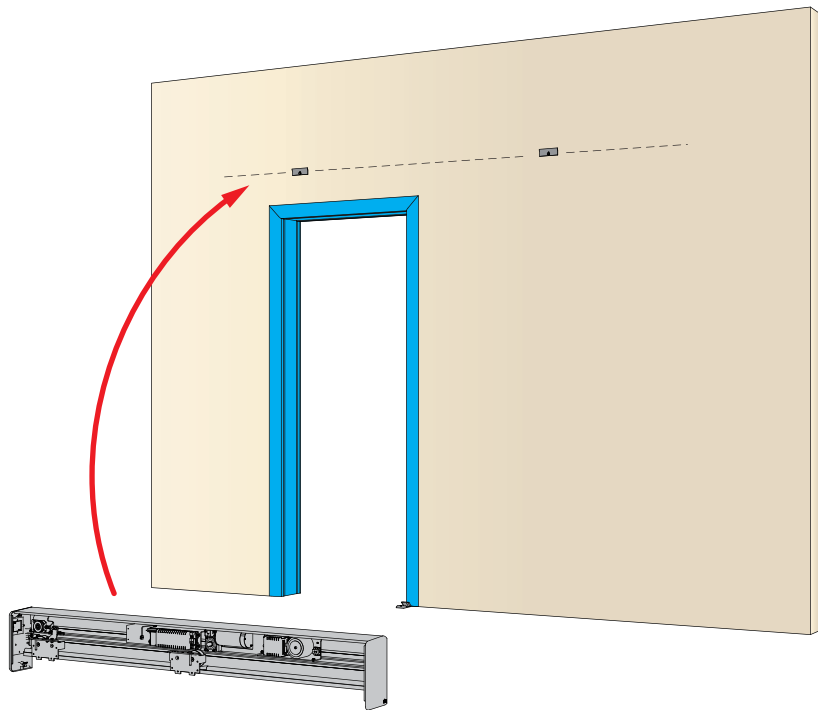


3. Installation instructions for one moving door wing VALORHS

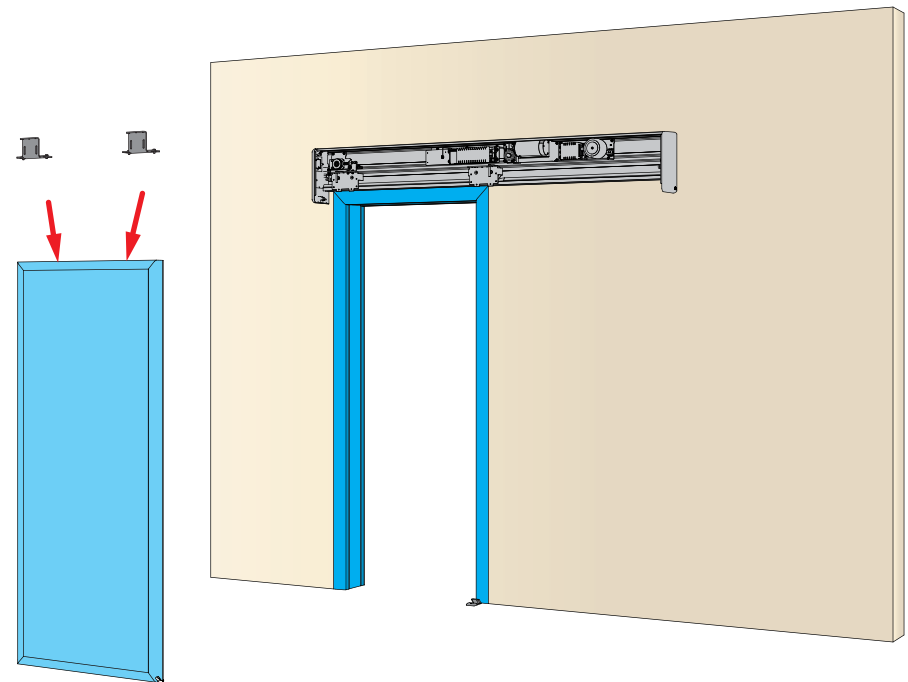


3. Installation instructions for one moving door wing VALORHS

7

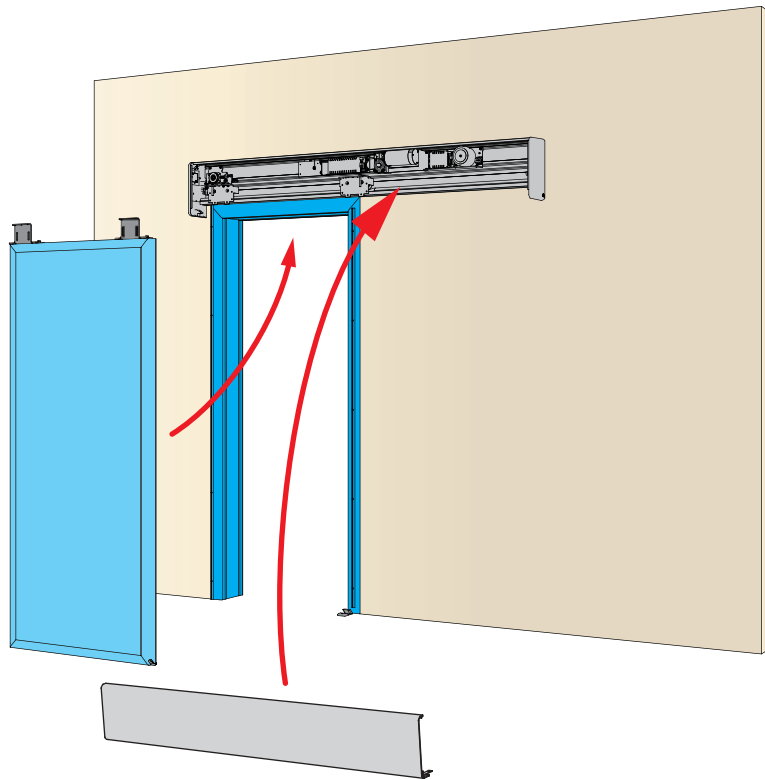


8

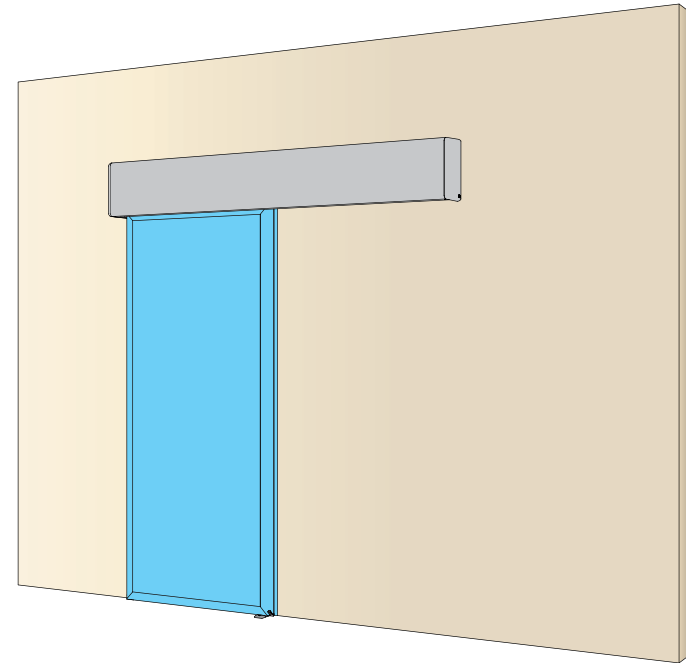


3. Installation instructions for one moving door wing VALORHS

9

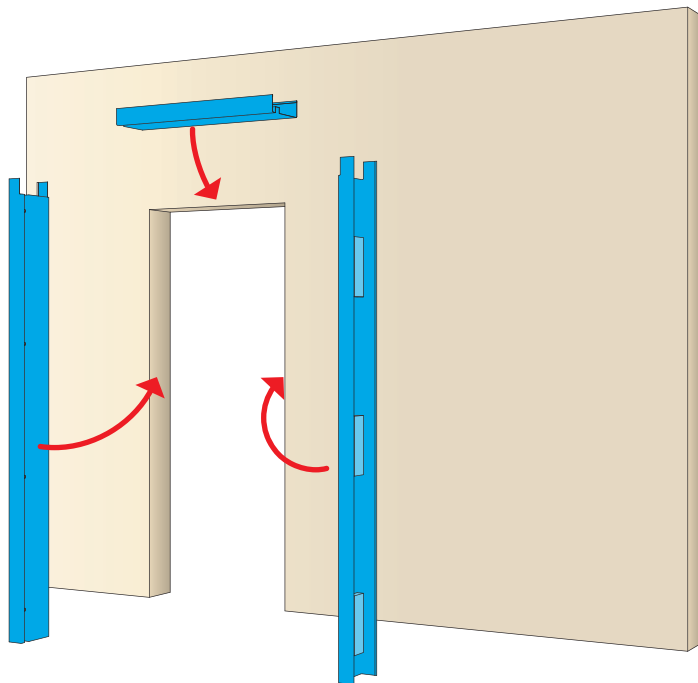


10

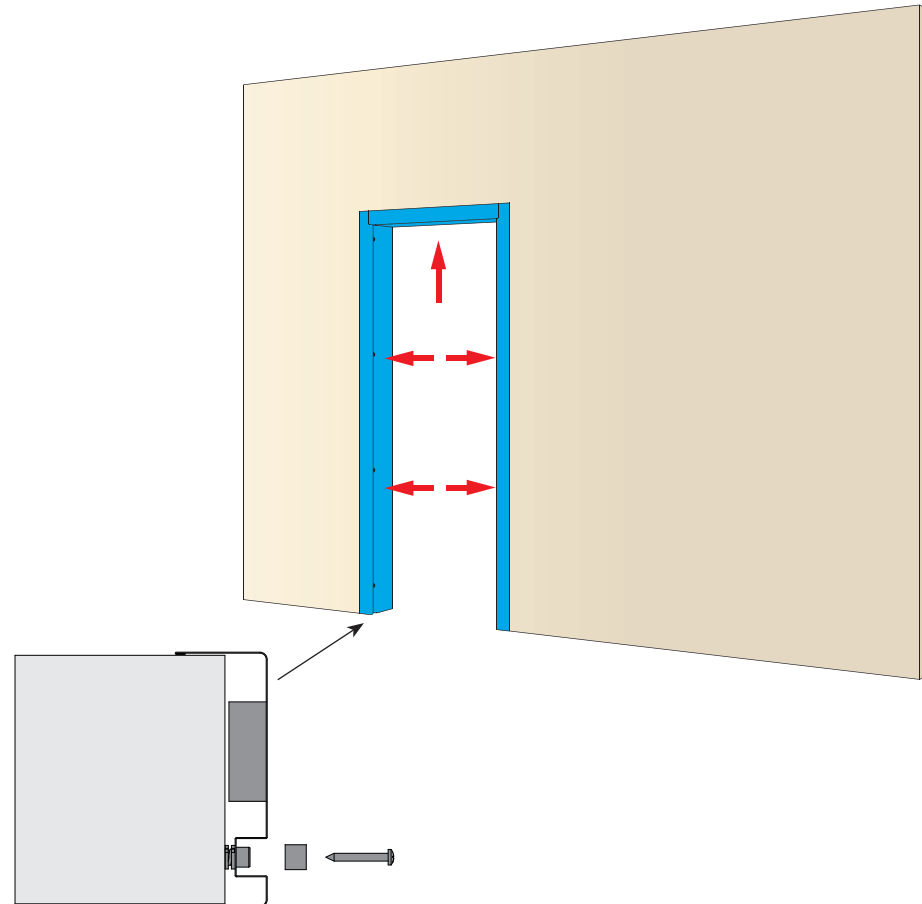


4. Installation instructions for one moving door wing VALORHH - Stainless steel

1

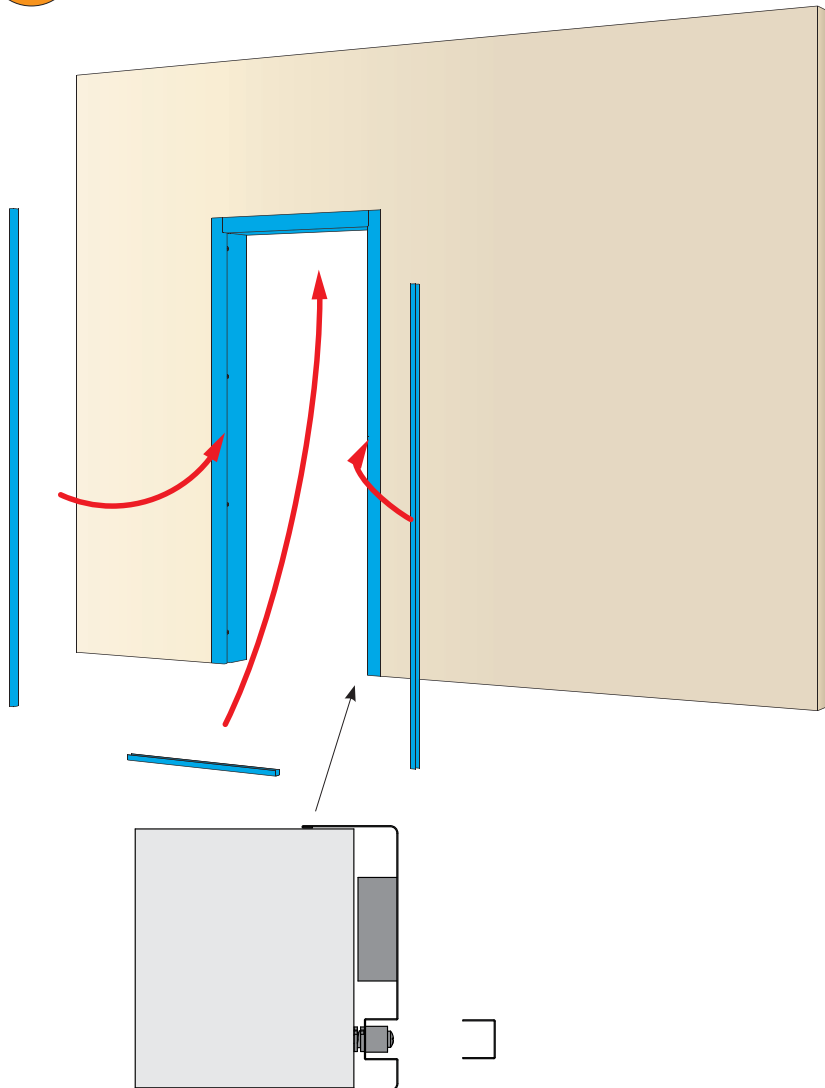


2

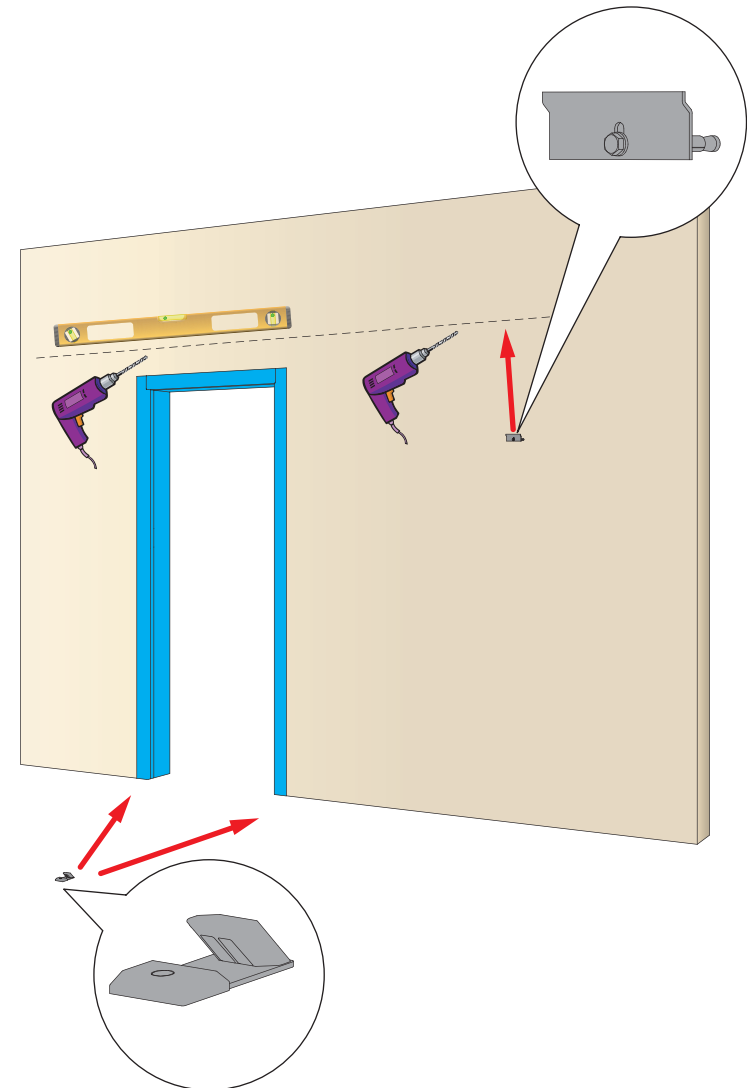


4. Installation instructions for one moving door wing VALORHH - Stainless steel

3



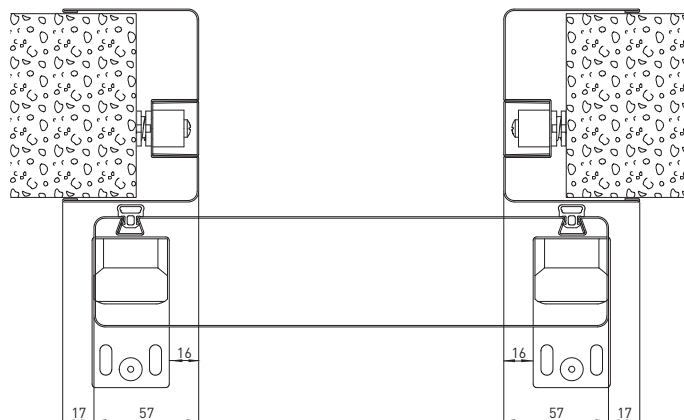
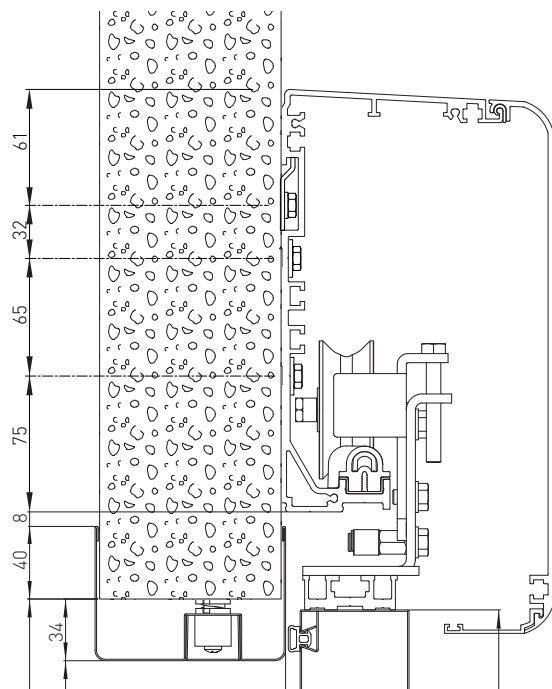
4



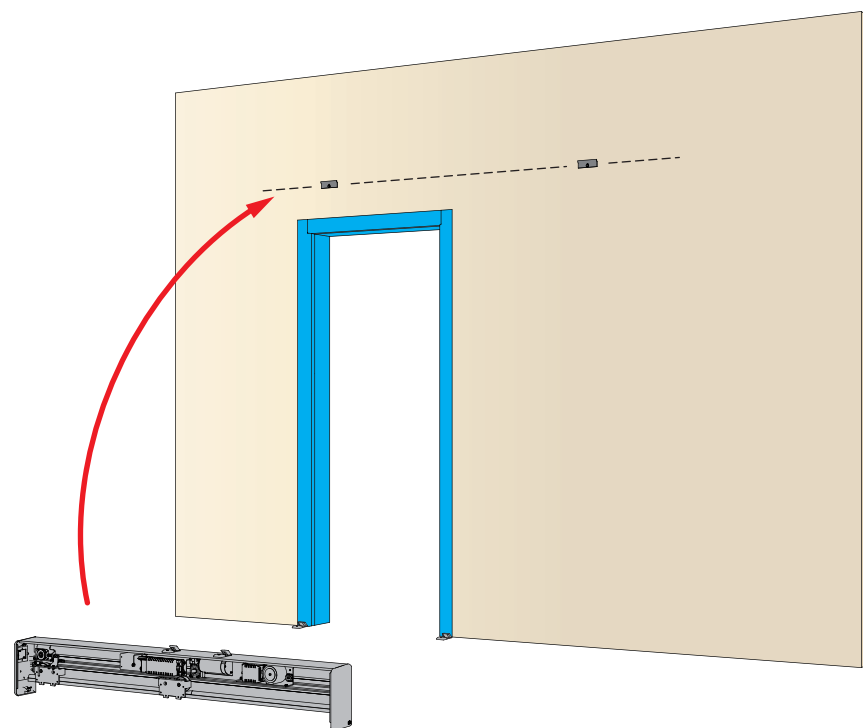
4. Installation instructions for one moving door wing VALORHH - Stainless steel

* With Pb

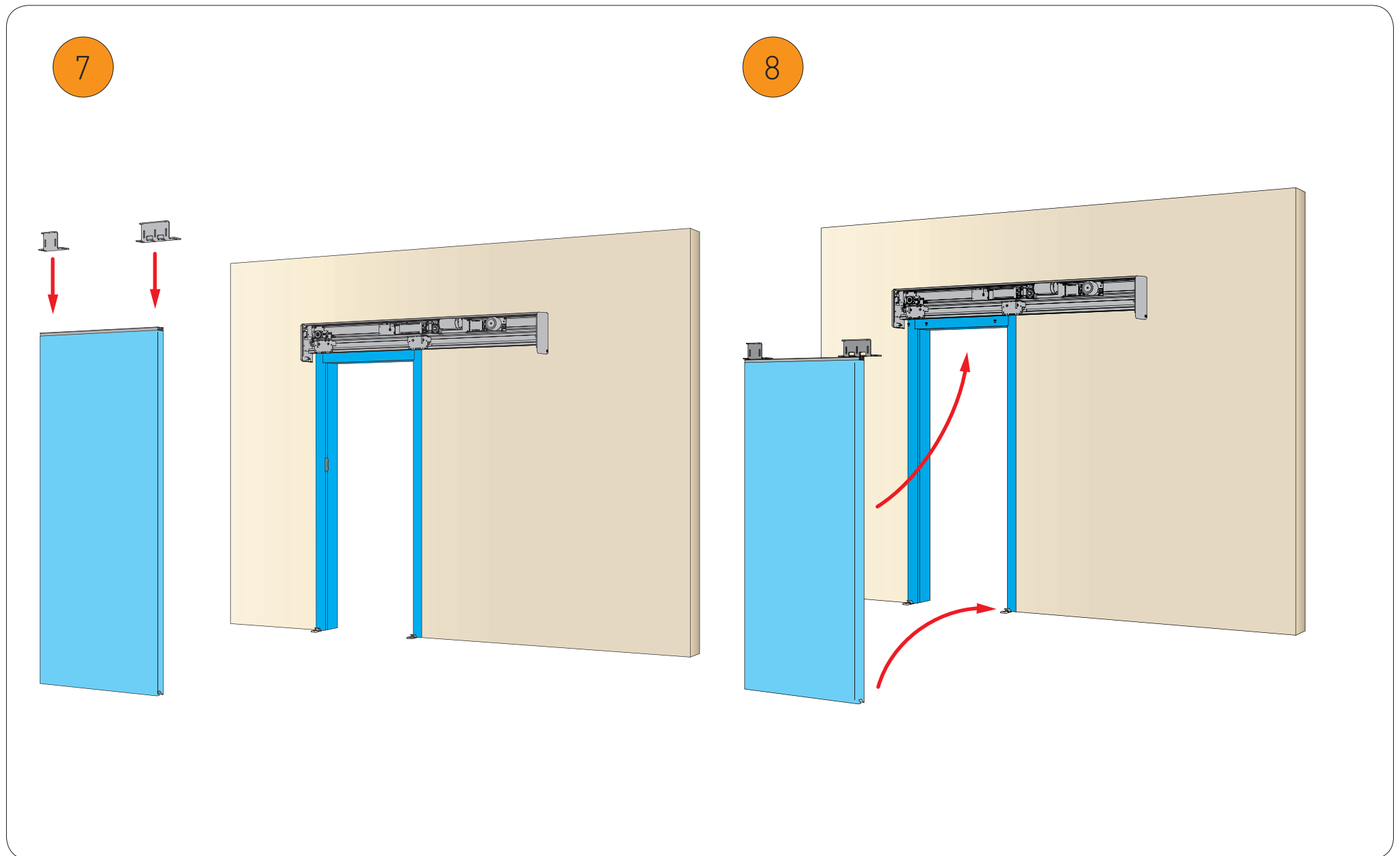
5



6

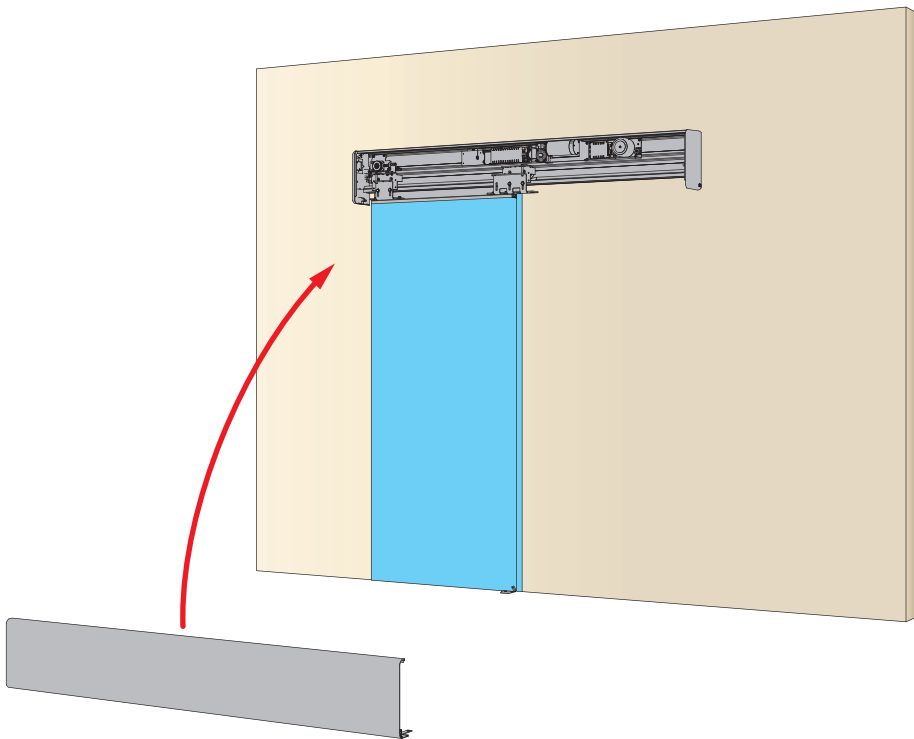


4. Installation instructions for one moving door wing VALORHH - Stainless steel

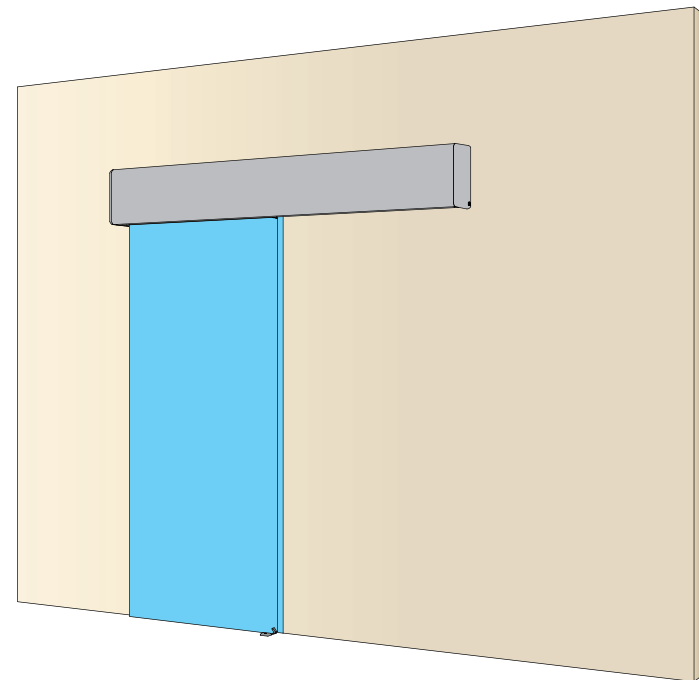


4. Installation instructions for one moving door wing VALORHH - Stainless steel

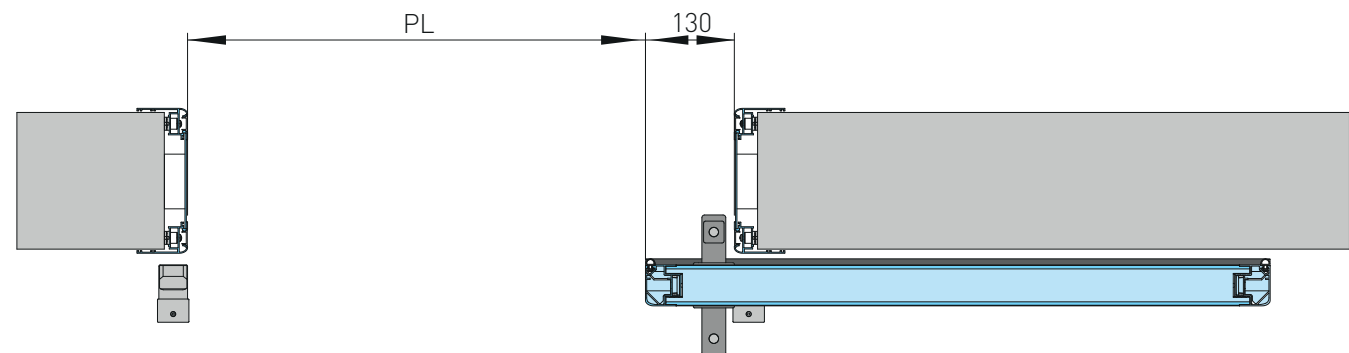
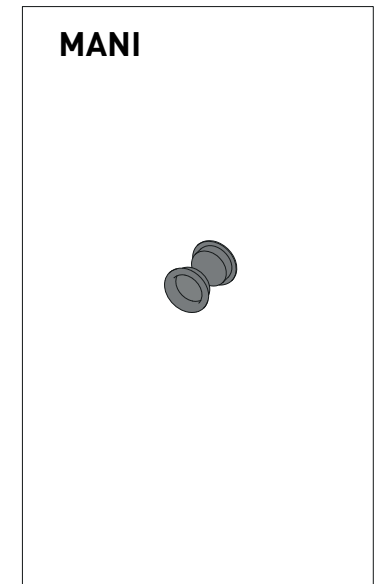
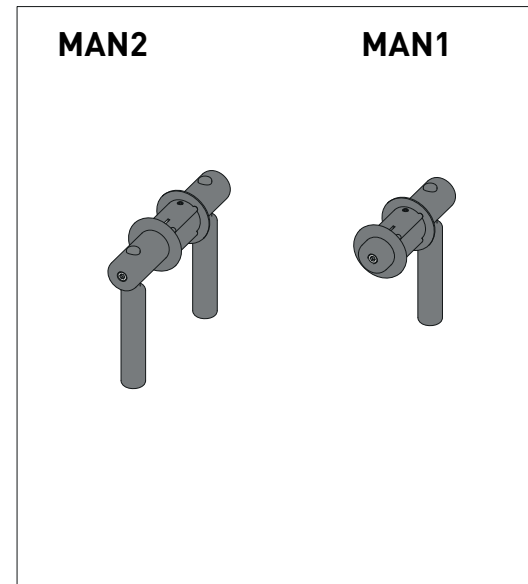
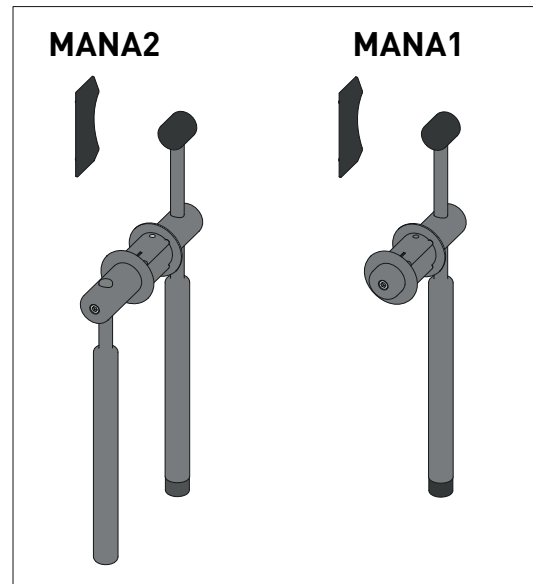
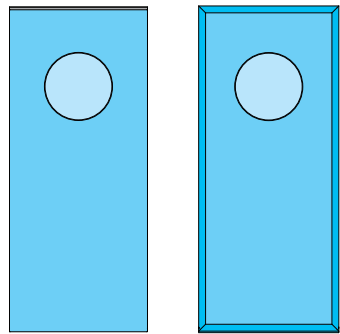
9



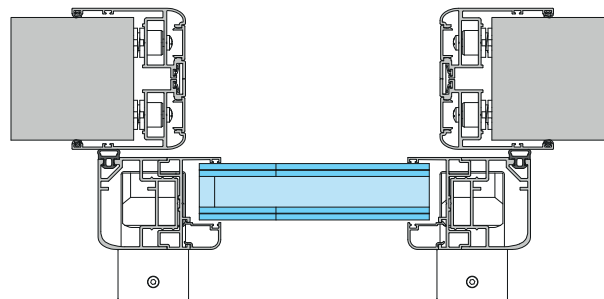
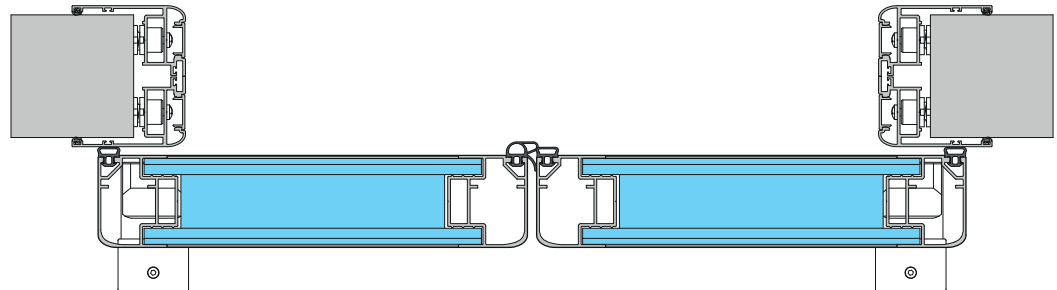
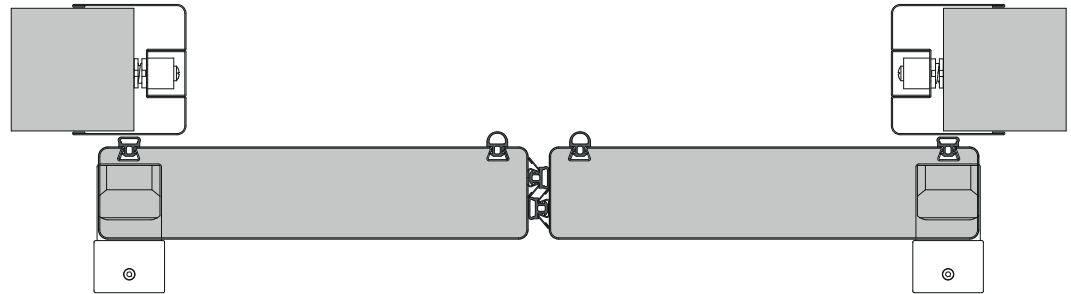
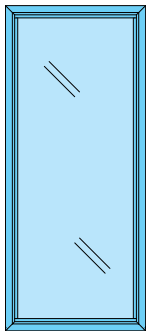
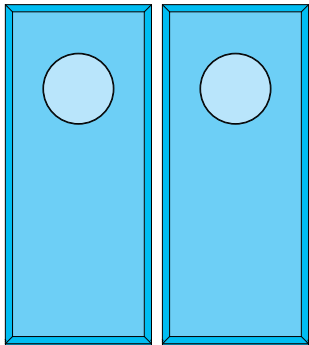
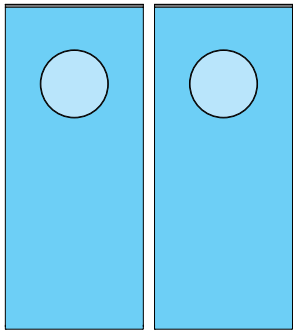
10



5. Installation instructions for door handle



6. Particular installations



All the rights concerning this material are the exclusive property of Entrematic Group AB. Although the contents of this publication have been drawn up with the greatest care, Entrematic Group AB cannot be held responsible in any way for any damage caused by mistakes or omissions in this publication.

We reserve the right to make changes without prior notice. Copying, scanning and changing in any way are expressly forbidden unless authorised in writing by Entrematic Group AB.



Entrematic Group AB
Lodjursgatan 10
SE-261 44, Landskrona
Sweden
www.ditecentrematic.com

ENTRE//MATIC

